

TECHNICAL SPECIFICATIONS

Print Technology	DOD piezoelectric inkjet print technology Up to 12 Kyocera print heads
Print Speed	Up to 50 m/ min (164 ft/ min) at 600 x 600 dpi
Print Width	Max. 324 mm (12.76 inch)
Ink	UV curable ink; 4 color channels, CMYK; 5 L per color
Media	Handling: tight web continuous roll feed Types: coated or uncoated paper, self-adhesive label stock, white film, PP, PE, PVC, PET, etc.
Unwind/ Rewind	Roll-fed Width: Max. 340 mm (13.39 inch); Roll Weight: Max. 150 kg (330.69 lbs); Roll Diameter: Max. 700 mm (27.56 inch); Core Diameter: 76.2 mm (3.0 inch)
Curing Lamps	4 UV-LED pinning lamps; 1 UV-LED final curing lamp
Environment	Temperature: 18-28°C (64-82°F); Relative Humidity: 40-60% (Recommended) Altitude: up to 1000 m (3281 ft)
Power Requirements	Electric Supply: 10.2 KW; 380 V; 3P+N+PE; 50/ 60 Hz; 60 A Compressed Air: 8 bar (116 psi), clean and dry
Additional Equipments	Air-pressure devices, e.g. air compressors
Options	Connecting exhaust ducts Corona Treater; Web Cleaner
Software	Professional Printer Control Software (PCS Pro) NuviPRINT® RIP Software NuviPRINT® VDP Module (Option)
Connectivity	PCIe Card; Fast Ethernet

* The Gemini 330-4C involves multiple patented technologies.
* For more custom configurations, please contact us for your requirements.

DIMENSIONS



• Digital UV-LED Label Press
W 4750 mm x D 1420 mm x H 1820 mm
(W 187.00" x D 55.90" x H 71.65")



• Digital UV-LED Integrated Solution
W 1184 mm x D 1414 mm x H 926 mm
(W 46.61" x D 55.67" x H 36.46")



• Ink Supply Cabinet
W 1000 mm x D 420 mm x H 1060 mm
(W 39.37" x D 16.54" x H 41.73")



• PC Stand
W 610 mm x D 630 mm x H 1730 mm
(W 24.00" x D 24.80" x H 68.10")



GEMINI 330-4C

Full Color UV Label Press



APPLICATIONS

- In-Line Label Printing
- Labels & Packaging
 - Industrial and security labels
 - Electronics and automotive labels
 - Pharmaceutical labels
 - Food and beverage
 - Cosmetics
- Variable Data Printing



- Up to 50 m/ min. at 600 x 600 DPI
- 4 ink channels; CMYK
- NuviPRINT® PDF RIP Software
- PANTONE® matching suit
- Short- & Medium-run print jobs
- 216 mm or 324 mm print width
- Field upgradeable from 216 mm to 324 mm print width
- Full automatic print head cleaning system
- UV-LED pinning and full curing



AMICA SYSTEMS Europe B.V.

Camerastraat 6, 1322 BC Almere, the Netherlands Phone: +31 (0) 36 21 00 166

E-mail: info@amicasystems.eu For more information, please visit www.amicasystems.eu

The information contained herein is subject to change without notice. All terms and product names may be trademarks or registered trademarks of their respective owners, and are hereby acknowledged.

©2001-2022 Amica Systems All rights reserved

2208 - c0405



Mailing & Printing



Packaging & Coding



Security Printing



Full Color Digital Printing

THE CHANCE TO MEET YOUR DIGITAL FUTURE

With decades of experience in UV inkjet technology, color management, and digital label printing, Amica has a deep understanding of the operational requirements and market needs in the label printing industrial. The Gemini 330-4C UV inkjet press is tailored for short to medium run full color label printing.

Owing to the completely modular design, the Gemini 330-4C offers the flexibility of adding options such as corona treatment, web cleaning, post printing embellishments, cold foil, lamination, in-line or offline laser die-cutting or slitting to meet your demands in the future. The Gemini 330-4C will be an ideal choice for those who are looking for industrial digital label printing solutions.

Outstanding print quality

The Gemini 330-4C hosts integrated pinning lamp technology which is manufactured by Amica Systems and tuned to match our NuviINK® inks. Vivid, accurate images are consistently achieved on a host of label materials.

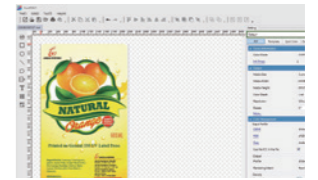
Reliable automation control technology

Thanks to the cutting-edge PLC automation control technology with touch screen, coupled with solid machine construction, the new generation Gemini 330-4C has the ability to provide users with more reliable production, higher uptime, and easier operation than ever before.

Variable data printing

NuviPRINT® VDP module (Option) is capable of realizing the modification of variable data and layout design.

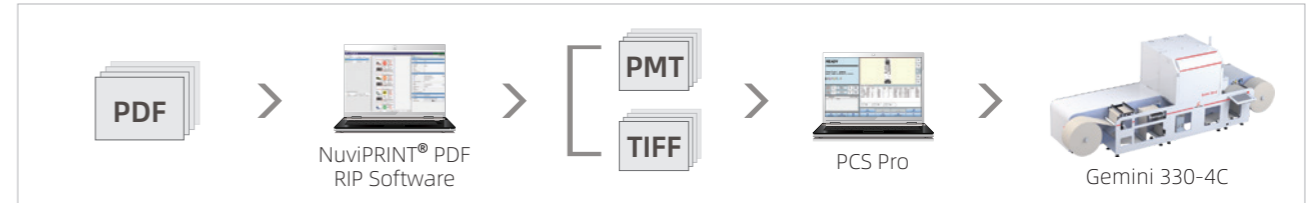
- The types of variable data include text, numbers, graphics, dates, times, serial numbers, images, barcodes, and 2D codes.
- Generates barcodes, 2D codes, and text from a variety of data sources.
- Supports static or variable bitmap files, such as BMP, JPEG, and TIFF.



Variable Data Printing

Streamlined production workflow

NuviPRINT® PDF RIP workflow not only implements a streamlined approach, but makes predictable and high-quality output as well. NuviPRINT® PDF RIP software, embedded with native Adobe® PDF Print Engine (APPE), ensures fast and accurate output of PDF files. Also NuviPRINT® can be connected seamlessly to internal ERP systems via secure hot-folders.



FEATURES

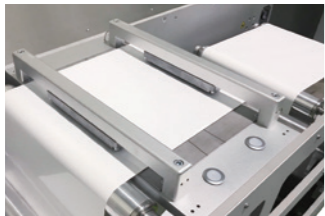
4 Web-guiding system

with movable ultrasonic edge guide sensor for high-precision web feeding. A warning will be displayed when the web guide reaches the limits of travel.



3 The web tension

is automatically adjusted according to the desired base tension. It is measured by spring loaded dancer rollers and controlled by PLC plus servo motor system.

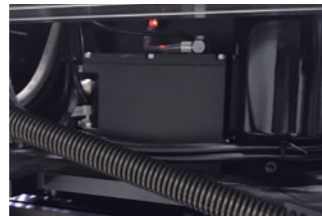


2 The splice table

with 2 independently controlled pneumatic clamps enables easy and fast roll change.

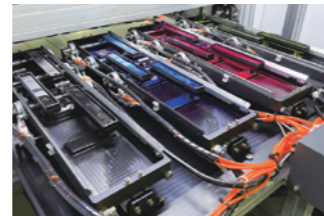
1 Servo-driven unwinder

with built-in web guide & air shafts automatically pre-tensions the web to prevent waste. Automatic web guide and stop-function when the roll is empty.



5 In-line corona treatment (Option)

increases the surface tension of the substrate in an effective way shortly before printing to obtain prints with optimum ink adhesion.



7 Automatic printhead cleaning

allows fully automatic purging, wiping, and capping to reduce time for daily maintenance.

8 UV-LED pinning curing

"freezes" ink droplets to control dot gain before overlaying follow-up colors or while fully curing.



9 Control panel with touch HMI

provides an intuitive UI on a 15" touch screen and incorporates remote support and industry 4.0 traceability.

10 Pneumatic regulators

adjust the clamping pressure of the nips. Nip-in has the option to tune the web tension by adjusting the stretch factor.

11 Servo-driven rewinder

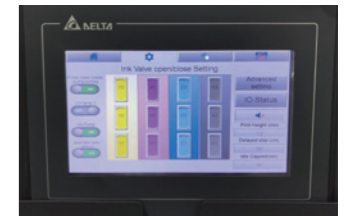
with 76 mm (3 inch) expanding air shaft supports web widths up to 700 mm (27.56 inch).

The Gemini 330-4C consists of the following parts:

- | | |
|----------------------|--|
| Hardware: | Software: |
| - Servo Transport | - NuviPRINT® RIP Software |
| - Printing Station | - PCS Pro |
| - Ink Supply Cabinet | - Variable Data Printing Module (Option) |
| - PC Stand | |

13 The PLC control system

with touch screen on the PC stand controls the axial movement and PWC, which has the advantages of higher reliability and faster response time.



12 Ink Supply Cabinet

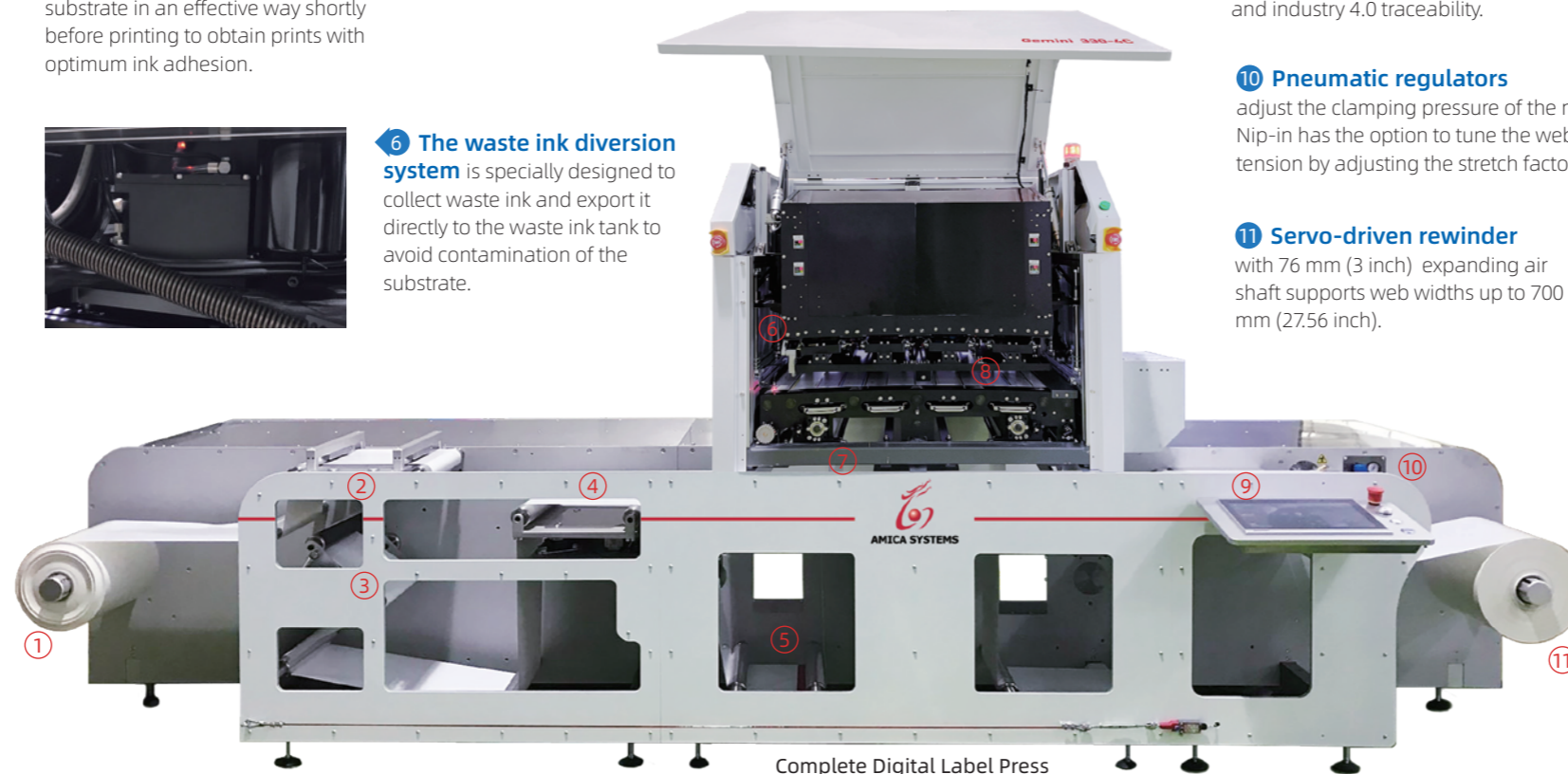
integrates automatic ink supply system and other features. 5L ink tanks are designed for high volume production.



Ink Supply Cabinet



PC Stand



Complete Digital Label Press